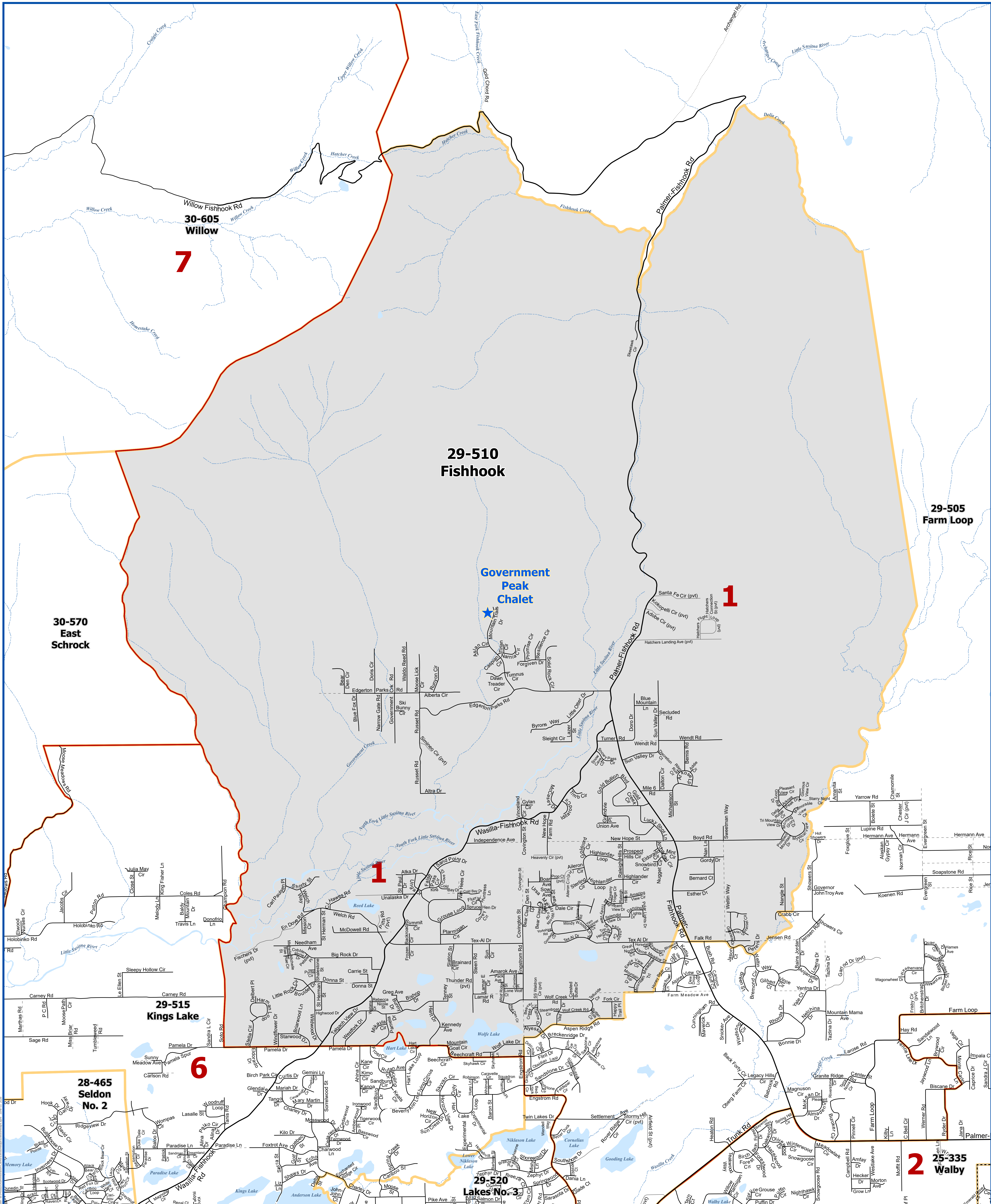
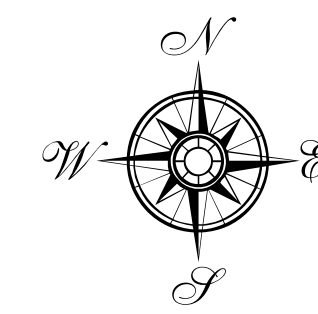




Matanuska-Susitna Borough Voting Precincts



Precinct # 29-510 Fishhook

Poll Location:
GOVERNMENT PEAK CHALET
10690 N. Mountain Trails Drive

Prepared by MSB
IT Department - GIS Division
Data Sources: Matanuska-Susitna Borough,
State of Alaska Division of Elections

June 2026



- Polling Location
- City Boundaries
- Voting Precincts
- Assembly District Boundaries
- Matanuska Susitna Borough Boundary
- Highway
- Major
- Medium
- Minor
- Private
- Primitive
- Not Constructed
- Railroad
- Major Waterbodies
- Streams